

Additional Collections Available Only Onsite

- Family Histories Collection
 - Butler County Histories Collection
 - Microfilm Collection
 - Vertical File Collection
 - Cemetery Inventory & Index
 - Polk City Directories
 - Maps
 - Ancestry Library Edition
-

Check out the Butler Area Public Library website for more information about the local collections and resources available onsite!



Find Us!

218 N. McKean Street
Butler, PA 16001

[www.https://www.butlerlibrary.info/](https://www.butlerlibrary.info/)

Weir Room Hours

Monday - Thursday

9:00 a.m. - 7:45 p.m.

Friday

9:00 a.m. - 4:45 p.m.

Saturday

9:00 a.m. - 3:45 p.m.

Sunday

Closed

Contact Us!

email: bapreference@bcfls.org

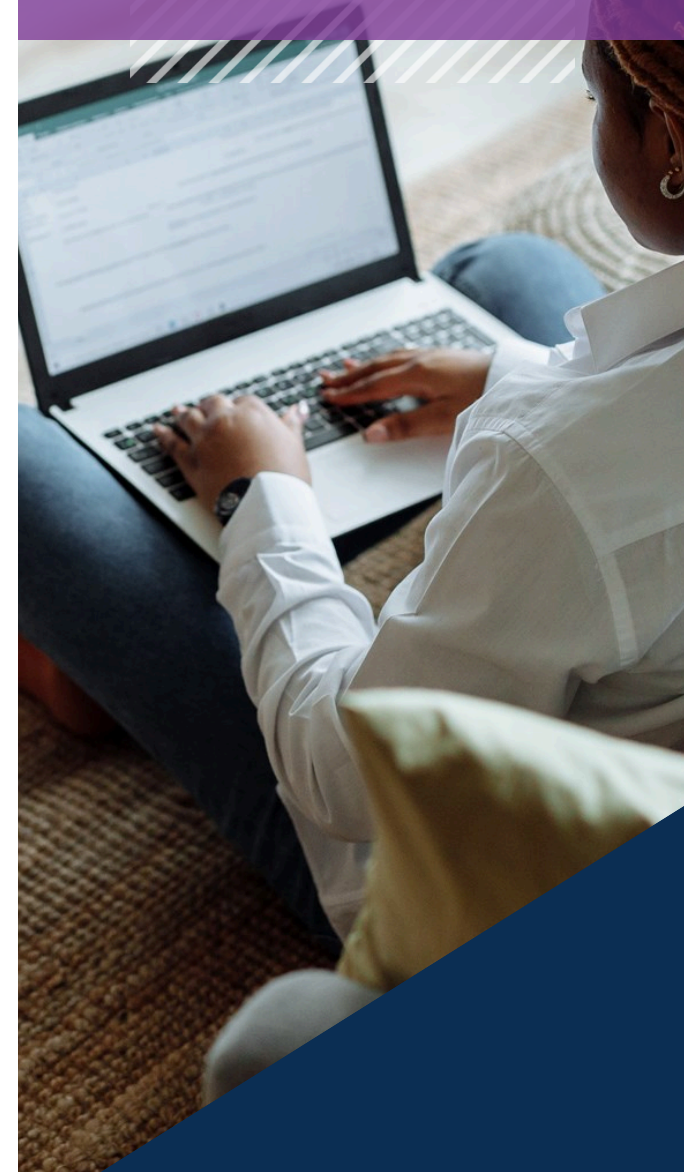
phone: 724-287-1715

While our staff are not able to perform genealogical research, we have created a variety of tools for self-directed research. For details, contact Information Services or check out our website at www.butlerlibrary.info/genealogy

BUTLER AREA PUBLIC *Library*
information education possibilities

LOCAL COLLECTIONS

online





Online Local Collections & Resources

Records Requests

Card Catalog

The Card Catalog is the best place to start your search of the library's collections.

All the local collections materials within the Weir Room, including the Vertical File Collection, are cataloged in the library card catalog. The catalog can be searched at any of the catalog stations in the library, from the Butler Area Public Library's website, or directly at bcfls.tlcdelivers.org.

Newspaper Index

The Butler Area Public Library Online Newspaper Database is an index to over **497,000** newspaper articles published in Butler County newspapers from 1818-2021. This collection is primarily obituaries and death notices, but you will also find citations for marriage license, divorces, accidents, court notices, and more.

Servicemen of Butler County Index

These indexes and reference volumes were created to support research of Butler County servicemen and women who served during World War II, the Korean War, and the Vietnam War, which are all still under-represented in online genealogy due to privacy laws governing service records.

These indexes are drawn from local news coverage in the Butler Eagle.

Using these linked indexes, researchers can find articles specific to one person's military service. News coverage can include draft notice, enlistment, training, letters home, photographs, promotions, report of injuries, and announcements of those Killed in Action.

In-library, researchers can also browse binders of the assembled articles, arranged in order of publication date.

Family History Fridays On-Demand Video Series

From beginner Ancestry.com research tips to advanced topics like courthouse record indexes and mapping strategies, our Family History Fridays series is available to watch any time, anywhere on the Butler Area Public Library's YouTube page.

Topics include:

- Top 5 Tips for Beginners
- Beginner's Guide to Family Search
- Census Secrets
- Using Sanborn Maps
- The Russell Key Index
- City Directories
- Pennsylvania Death Records
- Pennsylvania Birth Records

MyHeritage Library Edition

MyHeritage is a search engine made specifically for genealogy. It includes MyHeritage family trees, photos, and members that are public – altogether 19.8 billion exclusive records from all over the world that, in many cases, are only available on MyHeritage. Onsite at the Butler Area Public Library, the platform is available to all patrons.

Patrons with a library card can also remotely access this database from home, they will be prompted to enter their library card barcode number.



Step 1 - Identify Records

All records requests must include an associated citation from one of the following online indexes:

- Newspaper Index
- Servicemen of Butler County World War II Index
- Servicemen of Butler County Korean War Index
- Servicemen of Butler County Vietnam War Index

Step 2 - Records Request Form

Once record(s) have been identified, reproductions can be requested using the Article Request Form available at <https://www.butlerlibrary.info/obituary-and-newspaper-index>.

The form includes four sections:

Step 1 - Includes the fee structure for records requests and requires entry of an email address.

Step 2 - Requires selection of record type, number of records, citation details, and there is an option to provide additional information about the request.

Step 3 - Requires entry of contact information and selection of how records will be delivered.

Step 4 - Requires selection of payment method.

After submitting the form an email confirmation, including the details of the request, will be sent.

Step 3 - Remit Payment

Payment can be remitted via check or money order made payable to the **Butler Area Public Library** and mailed to the address below, or online at: www.butlerlibrary.info/donate

Butler Area Public Library
Attention: Information Services
218 N. McKean Street
Butler, PA 16001

